

Student remote access

Contents

Student remote access.....	1
Web Browser - HTML5 access (any other device)	2
VMware View Horizon – Client install (PC or Mac).....	4



Web Browser - HTML5 access (any other device)

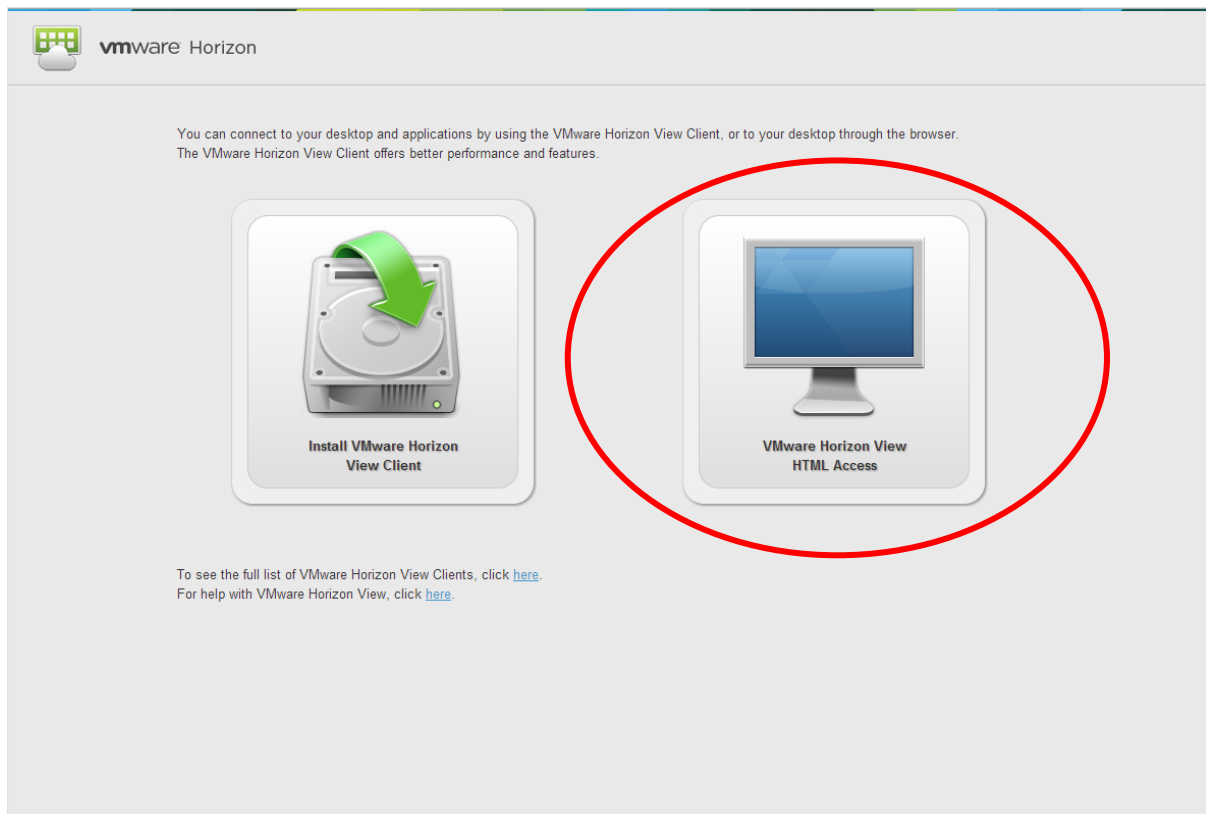
It is recommended to download and install the client on your Windows / MAC computer (see the next section of this guide). If you are unable to do this and have an up-to-date web browser listed below you can connect using the following steps:

To start using remote access go to: <https://vdi.silverdale-chorustrust.org>

If you are on a machine where you do not have sufficient privileges to install the client (someone else's computer, internet café etc.) and the device is one of the following:

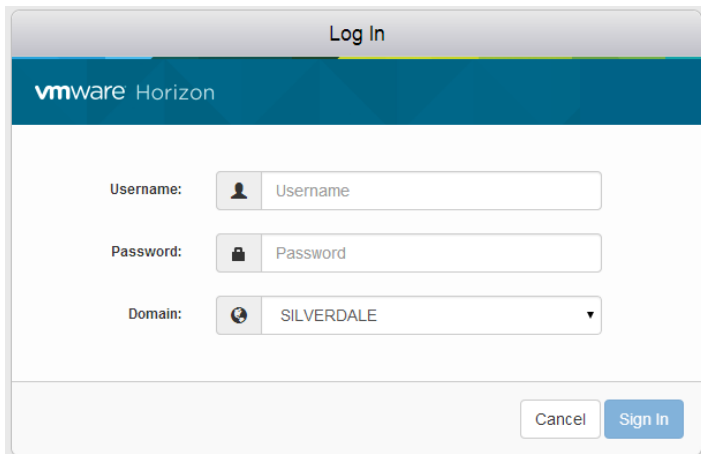
- Apple iOS
- Android
- OS X
- Windows
- Chrome
- Android
- Linux

You can connect using a web browser above. To do this click the “VMware Horizon View HTML Access” icon on the right.



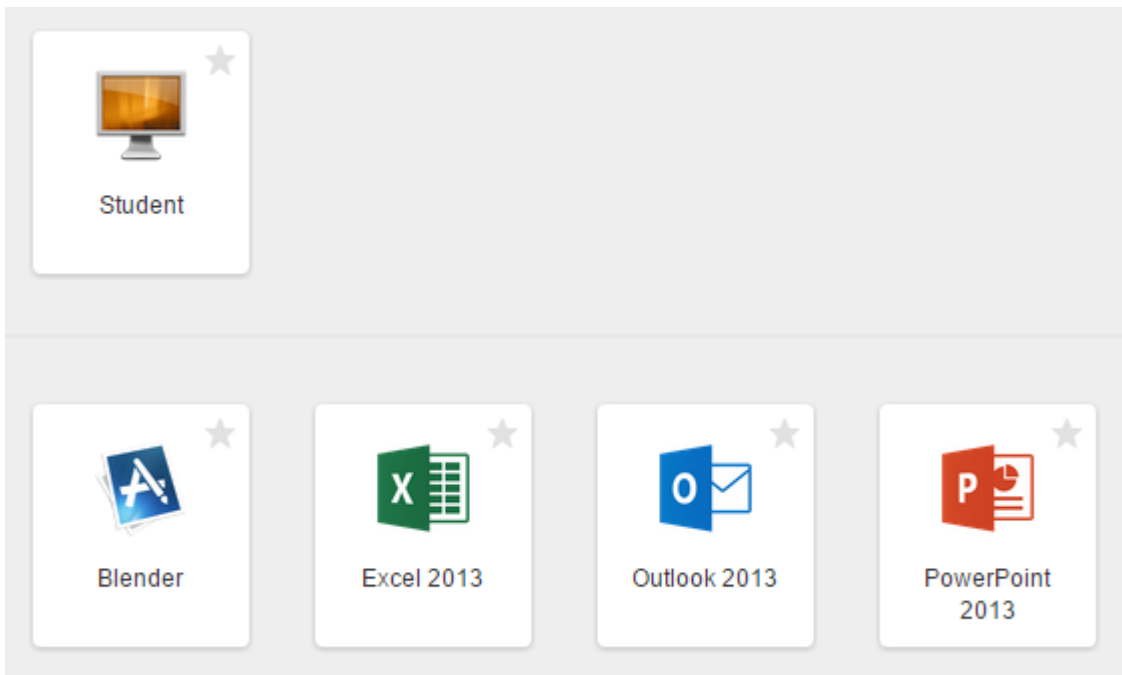
N.B. Please note due to licensing restrictions you are only licensed to use VMware Horizon remote desktop from a PC / Linux / Apple Mac operating system.

Enter your username and password and then click the “Login” button.



The image shows a VMware Horizon login window. At the top, it says "Log In" and "vmware Horizon". Below this, there are three input fields: "Username:" with a person icon and a text box containing "Username"; "Password:" with a lock icon and a text box containing "Password"; and "Domain:" with a globe icon and a dropdown menu showing "SILVERDALE". At the bottom right, there are two buttons: "Cancel" and "Sign In".

Simply click on the virtual desktop you require or remote application you want to run. Please note unless you are studying at Silverdale in the 6th form you will not have access to a full virtual desktop. These are reserved for 6th form only.



Once you have finished simply close your web browser.

N.B. Access to your home drive will be available from any remote application.

N.B. Please note due to licensing restrictions you are only licensed to use VMware Horizon remote desktop from a PC / Linux / Apple Mac operating system.

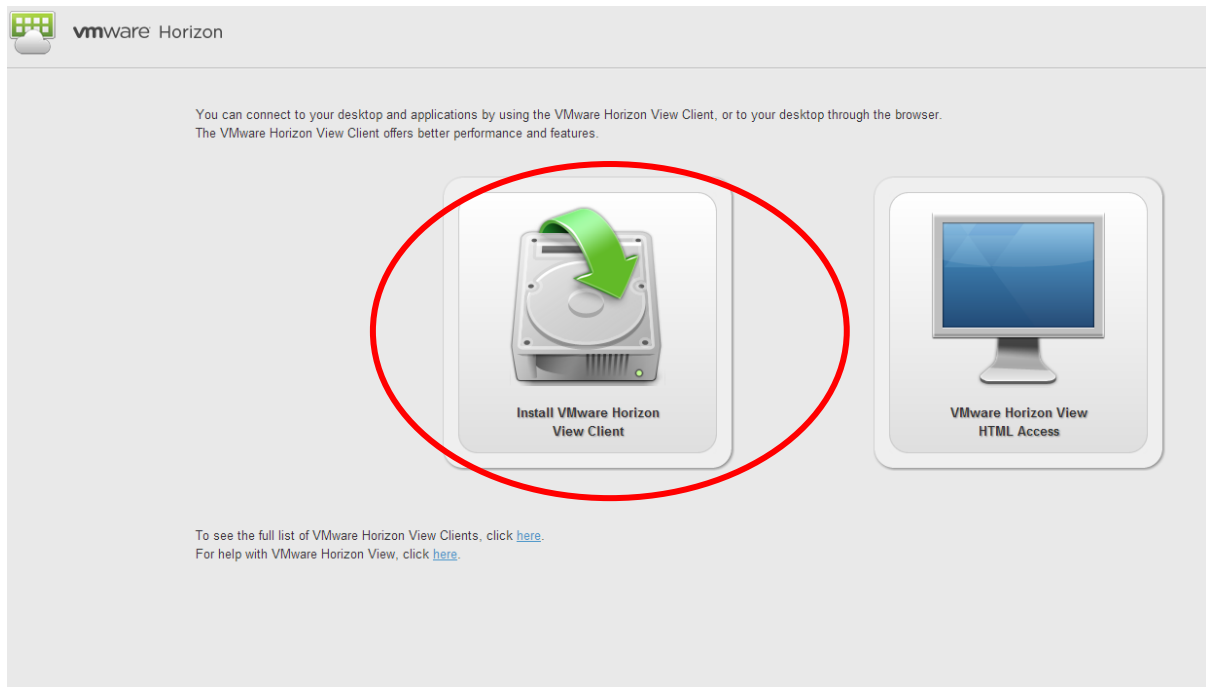
VMware View Horizon – Client install (PC or Mac)

Students have the ability to connect to the school computer systems from outside of school.

Firstly you **need a Windows** or an **Apple Mac** machine.

To start using remote access go to: <https://vdi.silverdale-chorustrust.org>

You will see the following screen:



Click the “Install VMware Horizon View Client” icon. This will then take you to the VMware website:

Product	Release Date	
▼ VMware Horizon View Client for Windows		
VMware Horizon View Clients for 32-bit Windows	2013-07-11	Go to Downloads
VMware Horizon View Clients for 64-bit Windows	2013-07-11	Go to Downloads
[Red hatched area]		
▼ VMware Horizon View Client for Mac		
VMware Horizon View Client for Mac	2013-07-11	Go to Downloads

Download the client that is appropriate for your operating system. Click the “Go to Downloads”.

N.B. Please note due to licensing restrictions you are only licensed to use VMware Horizon remote desktop from a PC / Linux / Apple Mac operating system.

Download VMware Horizon View Clients for 64-bit Windows

Select Version **5.4.0**

Description The VMware Horizon View Client for 64-bit Windows

Release Date 2013-07-11

Type Product Binaries

Product Resources

[View My Download History](#)

[Product Info](#)

[Documentation](#)

[VMware View Mobile Client Privacy](#)

[Horizon View Community](#)

Product Downloads Drivers & Tools Open Source Custom ISOs

Product/Details

VMware Horizon View Client for 64-bit Windows
File size: 40M
File type: exe
[Read More](#)

Download

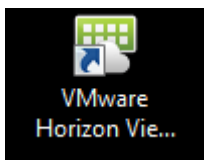
Download the client by selecting “[Download](#)”. Once downloaded run the installer, agree to the terms of the software, click next.

On the “*Default View Connection Server*” enter:

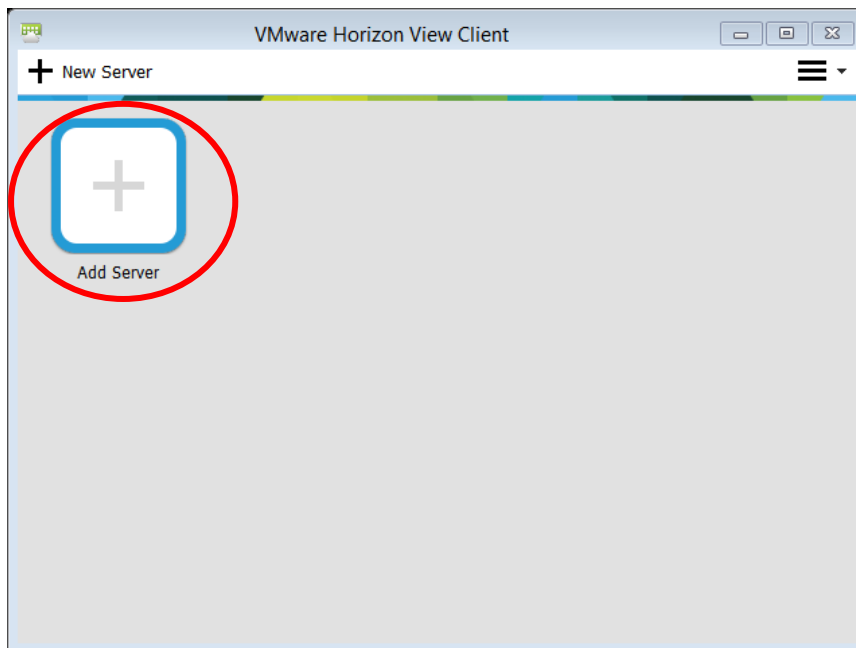
vdi.silverdale-chorustrust.org

Next, next, Install. This will then install the VMware Horizon View Client on your machine.

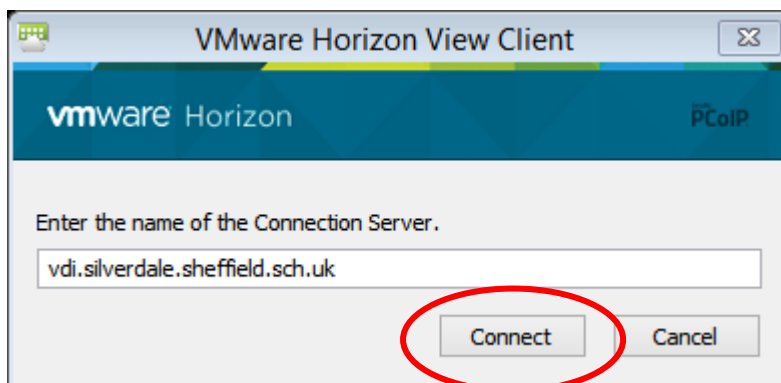
Once installed run the client



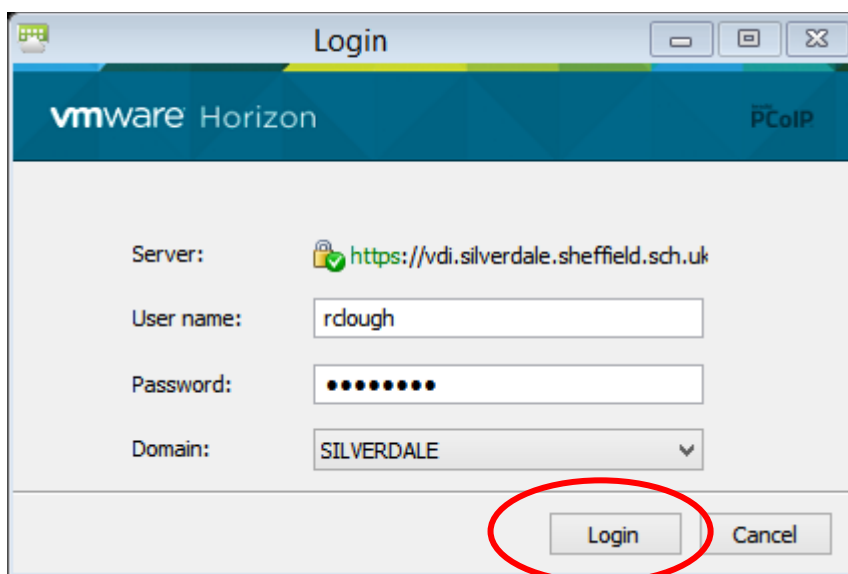
When the client loads (Windows) you should get a window like:



Double click "Add Server" and add: vdi.silverdale-chorustrust.org

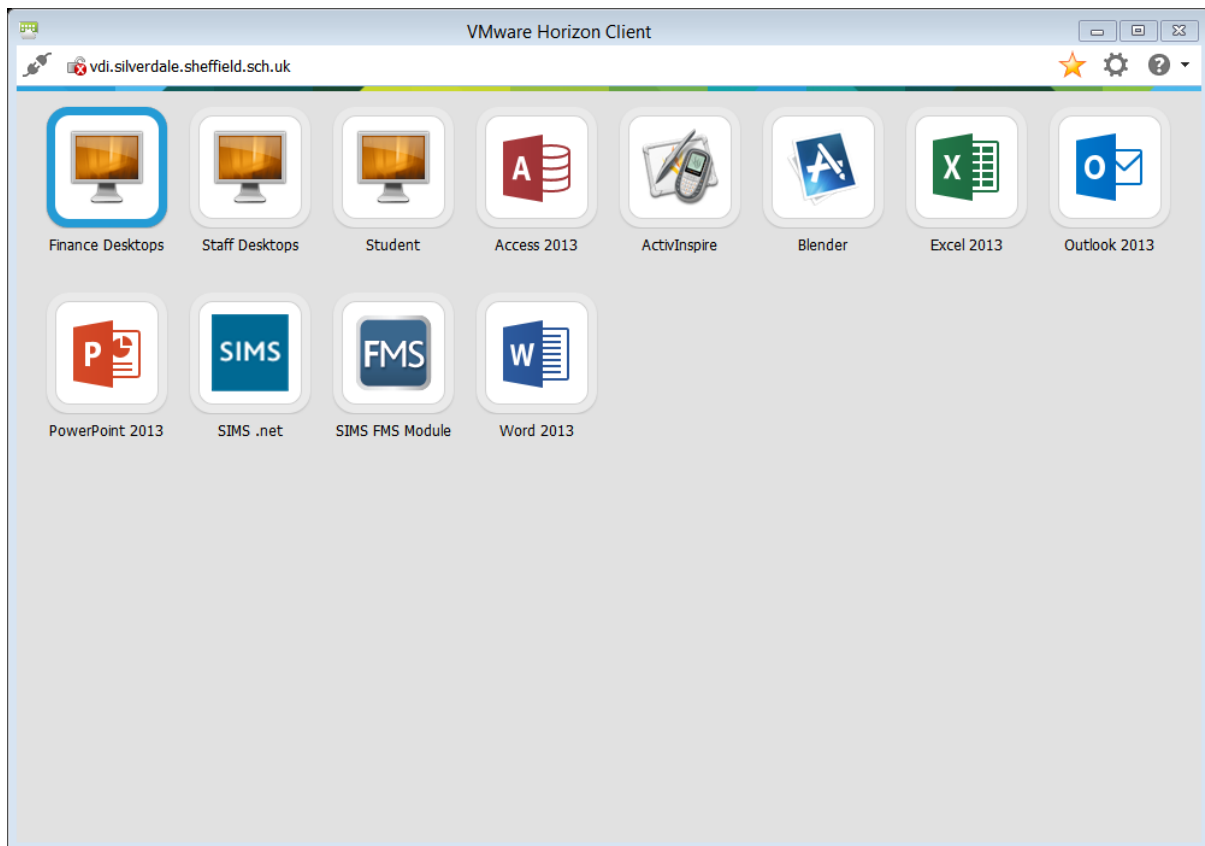


The next window then prompts you for your username and password:



N.B. Please note due to licensing restrictions you are only licensed to use VMware Horizon remote desktop from a PC / Linux / Apple Mac operating system.

Once this has authenticated your username and password and assuming they are correct it will show you the following screen:



N.B. your options to choose from vary depending upon what year you are in.

N.B. Please note due to licensing restrictions you are only licensed to use VMware Horizon remote desktop from a PC / Linux / Apple Mac operating system.